



PLANT, TOOL & GRAB LORRY HIRE

anglianplantLtd

EQUIPMENT & SERVICES 2015

t: 08444 411889 e: hire@anglianplant.com
www.anglianplant.com





ANGLIAN PLANT LIMITED

A BRIEF INSIGHT

Anglian Plant Limited was incorporated in 2009 from the roots of a company that specialised in machinery trading. We recognised an opening for a plant hire company that offers an experience that's not only straight forward but supported with a high level of customer service.

Now an established company we continue to offer our customers large and small alike a friendly service with a family feeling. We strive to offer quality equipment at competitive rates backed by reliable logistics and responsive engineers.



If you cannot see what you are looking for in this guide please call us, it's likely we can source it for you.

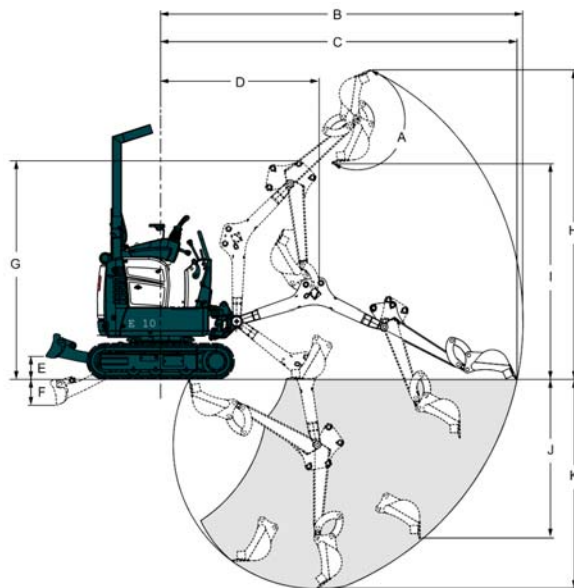
INDEX

Excavators	6 - 10
Excavator Attachments	11
Wheel Diggers/Backhoes	12
Site Dumpers	13 - 15
Loaders	16
Telescopic Handlers	17- 19
Telescopic Handler Attachments	20
Rollers	21
Concrete Crusher	22
Powered Access	23 - 27
Fuel / Water Storage	28
Lighting	29
Tipper Grab Lorries	30
Operated Plant	31
Small Tools	32
Coverage	33
Mobile Welfare	34
How To Hire	35
Bog Mats	36
Calendar	37
Credit Account Form	39

1 Tonne Micro Excavator

Width 710mm
Expanding to 1100mm
Height 2209mm
reducing to tbc

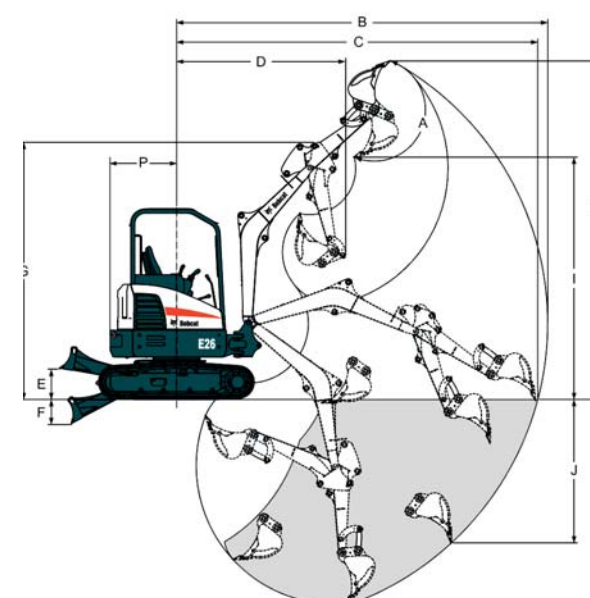
- (A) 196°
- (B) 3145.0 mm
- (C) 3093.0 mm
- (D) 1374.0 mm
- (E) 196.0 mm
- (F) 230.0 mm
- (G) 1899.0 mm
- (H) 2685.0 mm
- (I) 1818.0 mm
- (J) 1383.0 mm
- (K) 1820.0 mm



3 Tonne Mini Excavator

Width 1515mm
Height 2412mm

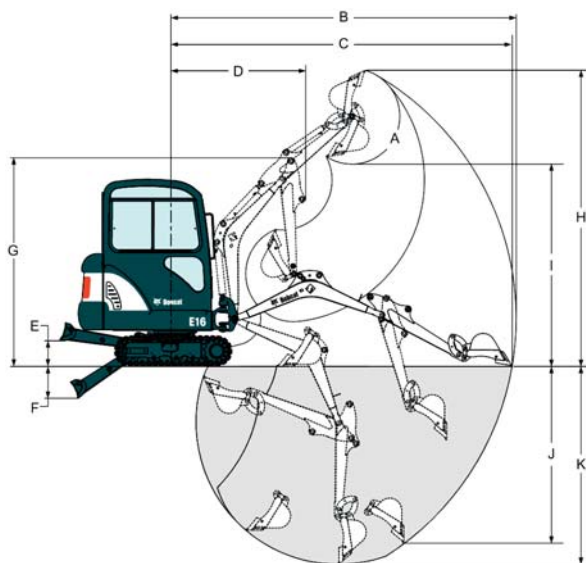
- (A) 185°
- (B) 4552.0 mm
- (B*) 4966.0 mm
- (C) 4678.0 mm
- (C*) 4850.0 mm
- (D) 2132.0 mm
- (D*) 2135.0 mm
- (E) 385.0 mm
- (F) 315.0 mm
- (G) 3246.0 mm
- (H) 4272.0 mm
- (H*) 4473.0 mm
- (I) 3057.0 mm
- (I*) 3258.0 mm
- (J) 1809.0 mm
- (J*) 2089.0 mm
- (K) 2582.0 mm
- (K*) 2890.0 mm



1.6 Tonne Mini Excavator

Width 980mm
Expanding to 1330mm
Height 2171mm

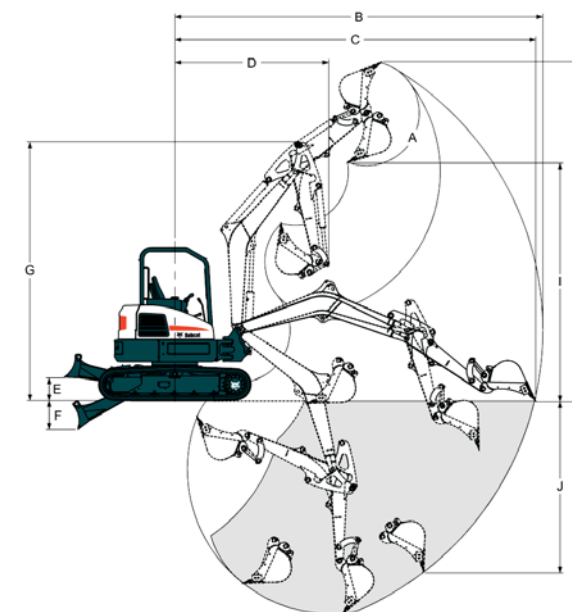
- (A) 196°
- (B) 4146.0 mm
- (B*) 4319.0 mm
- (C) 4101.0 mm
- (C*) 4276.0 mm
- (D) 1576.0 mm
- (D*) 1586.0 mm
- (E) 308.0 mm
- (F) 368.0 mm
- (G) 2564.0 mm
- (H) 3616.0 mm
- (H*) 3743.0 mm
- (I) 2529.0 mm
- (I*) 2656.0 mm
- (J) 2139.0 mm
- (J*) 2310.0 mm
- (K) 2422.0 mm
- (K*) 2602.0 mm



5 Tonne Midi Excavator

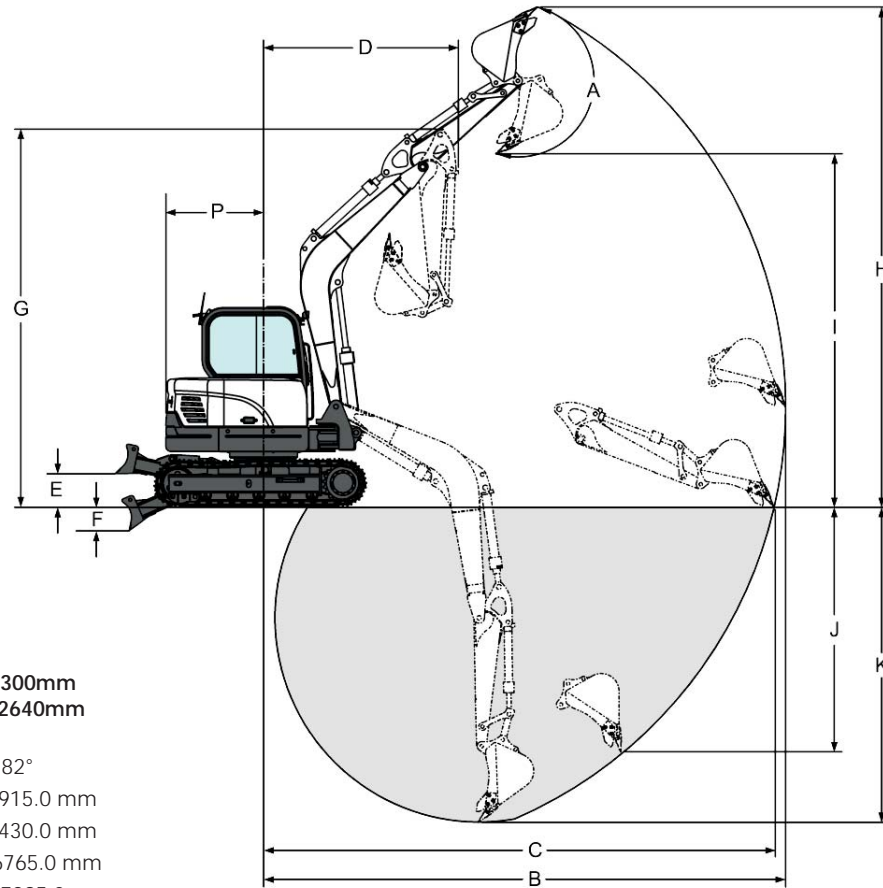
Width 1515mm
Height 2412mm

- (A) 185°
- (B) 6062.0 mm
- (B) 6441.0 mm
- (C) 5939.0 mm
- (C*) 6333.0 mm
- (D) 2541.0 mm
- (D*) 2639.0 mm
- (E) 385.0 mm
- (F) 465.0 mm
- (G) 4269.0 mm
- (H) 5595.0 mm
- (H*) 5850.0 mm
- (I) 3924.0 mm
- (I*) 4179.0 mm
- (J) 2815.0 mm
- (J) 3199.0 mm
- (K) 3524.0 mm
- (K*) 3923.0 mm



8 Tonne Midi Excavator

14 Tonne Excavator



Width 2300mm
Height 2640mm

- (A) 182°
- (B) 6915.0 mm
- (B) 7430.0 mm
- (C) 6765.0 mm
- (C*) 7295.0 mm
- (D) 2550.0 mm
- (D*) 2635.0 mm
- (E) 437.0 mm
- (F) 304.0 mm
- (G) 5007.0 mm
- (H) 6630.0 mm
- (H*) 6980.0 mm
- (I) 4645.0 mm
- (I*) 4995.0 mm
- (J) 3245.0 mm
- (J*) 3755.0 mm
- (K) 4175.0 mm
- (K*) 4725.0 mm

- Dig Depth 5645mm
- Reach at Ground Level 8156mm
- Dump Height 6300mm
- Operating Weight 14MT
- Transport Length 7680mm
- Transport Height 2710mm
- Width 2590mm
- Tailswing Radius 2200mm
- Ground Clearance 410mm
- Track Length 3755mm
- Track Pad Width 700mm



14 Tonne Excavator reduced tail swing

- Dig Depth 5500mm
- Reach at Ground Level 8155mm
- Vertical Wall Max Depth 4555mm
- Dump Height 6840mm
- Operating Weight 14.48MT
- Transport Length 7230mm
- Transport Height 2710mm
- Width 2490mm
- Tailswing Radius 1480mm
- Ground Clearance 410mm
- Track Length 3755mm
- Track Pad Width mm





- Dig Depth 6620mm
- Reach at Ground Level 9730mm
- Dump Height 6990mm
- Operating Weight 22MT
- Transport Length 9485mm
- Transport Height 3005mm
- Width 2990mm
- Track Length 4445mm
- Track Pad Width 700mm

EXCAVATOR BREAKERS & ATTACHMENTS

CONCRETE BREAKERS

TO SUIT 1-22 TONNE EXCAVATORS

TRENCHING UNITS

TO SUIT 3 TONNE EXCAVATORS

EARTH DRILLS/AUGERS

TO SUIT 1.5-8 TONNE EXCAVATORS

RIDDLE BUCKETS

TO SUIT 5-22 TONNE EXCAVATORS

DEMOLITION GRAPPLES

TO SUIT 14-22 TONNE EXCAVATORS

PALLET FORKS

TO SUIT 5-8 TONNE EXCAVATORS

Wheel Digger



- Weight 8070kg
- Width 2350mm
- Height 2910mm
- Dig depth 5970mm

0.5 Tonne Tracked Dumper

- Machine weight 475kg
- Carrying capacity 500kg
- Clearance tipping 1.45m
- Machine length 1.7m
- Machine width 0.69m



1 Tonne High Tip Dumper

- Unladen weight 1295kg
- Width: Normal Wheels 1115mm
- Height (Rops Up) 2860mm
- Height (Rops Down) 1773mm
- Maximum tipping height 1573mm
- Skip capacity 500Ltr
- Length 3032mm
- Maximum safe load 1000kg



3 Tonne Swivel Tip Dumper

- Unladen weight 2160kg
- Width 1650mm
- Height (Rops Up) 3092mm
- Height (Rops Down) 1965mm
- Maximum tipping height 735mm
- Skip capacity 1640Ltr
- Length 3935mm
- Maximum safe load 3000kg



9 Tonne Dumper



6 Tonne Swivel Tip Dumper

- Unladen weight 4340kg
- Width 2280mm
- Height (Rops Up) 3300mm
- Height (Rops Down) 2230mm
- Maximum tipping height 1100mm
- Skip capacity 3150Ltr
- Length 4750mm
- Maximum safe load 6000kg



- Unladen weight 4770kg
- Overall length 4520mm
- Width over tires 2420mm
- Width over hopper 2500mm
- Height to top of cab/rollbar 3130 mm
- Transport height 2320mm
- Wheelbase length 2500mm
- Loading capacity 9000kg

Mini Loader

- Drive Speed (max) 10km/h
- Max Pulling Force 950 kp
- Weight 1150kg + 170kg
- Turning Radius (inside / outside) 995mm / 2050mm
- Max. Lifting Height (with telescopic boom) 2790mm
- Tipping Load 800kg



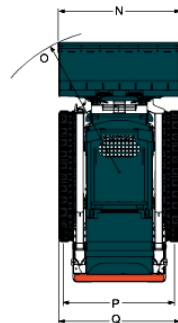
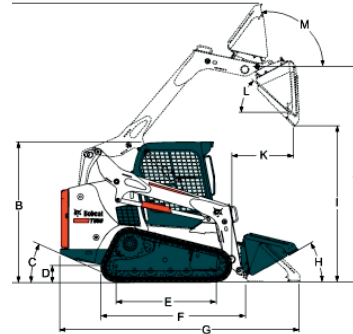
4m Lift Telescopic Handler

- Lift Capacity 2 Tonnes
- Max Lift height 4 Metres
- Width 1560mm
- Length 3380mm
- Height 1970mm



Tracked Loader

- Rated operating capacity (no more than 35% of Tipping Load) 992 kg
- Tipping load 2,834 kg
- Max. travel speed 11.8 km/h
- (A) Operating height 3,901 mm
- (B) Height with operator cab 1,972 mm
- (C) Angle of departure 28.8 °
- (D) Ground clearance 185 mm
- (E) Ground contact length 1,402 mm
- (F) Length without attachment 2,657 mm
- (G) Length with standard bucket 3,378 mm
- (H) Rollback at ground position 30 °
- (I) Dump height with standard bucket 2,319 mm
- (J) Height to bucket hinge pin 3,023 mm
- (K) Dump reach at maximum height 887 mm
- (L) Dump angle at maximum height 42 °



7m Lift Telescopic Handler

- Lift Capacity 3.1 Tonnes
- Max Lift Height 7 Metres
- Width 2230mm
- Length 4990mm
- Height 2490mm



8m Lift Telescopic Handler

- Lift Capacity 5 Tonnes
- Max Lift Height 8.1 Metres
- Width 2420mm
- Length 5270mm
- Height 2590mm



10.5m Lift Telescopic Handler

- Lift Capacity 3.3 Tonnes
- Max Lift Height 10.2 Metres
- Width 2290mm
- Length 5380mm
- Height 2490mm



14m Lift Telescopic Handler

- Lift Capacity 4 Tonnes
- Max Lift Height 13.8 Metres
- Width 2350mm
- Length 6250mm
- Height 2590mm



9.5m Lift Telescopic Handler

- Lift Capacity 3.5 Tonnes
- Max Lift Height 9.5 Metres
- Width 2290mm
- Length 4990mm
- Height 2490mm



17m Lift Telescopic Handler

- Lift Capacity 4 Tonnes
- Max Lift Height 16.7 Metres
- Width 2440mm
- Length 6360mm
- Height 2690mm



TELEHANDLER/LOADER ATTACHMENTS

PALLET FORKS & GP BUCKET

TO SUIT ALL LOADERS/TELEHANDLERS

MAN CAGE

TO SUIT ALL TELEHANDLERS

SWEEPER ATTACHMENTS

TO SUIT ALL LOADERS/TELEHANDLERS

PALLET FORK EXTENSIONS

TO SUIT ALL LOADERS/TELEHANDLERS

TRUSS JIB

TO SUIT ALL TELEHANDLERS

80cm Twin Drum Vibrating Roller

- Drum Width 800mm
- Operating Weight 1620kg



120cm Twin Drum Vibrating Roller

- Drum Width 1200mm
- Operating Weight 2700kg



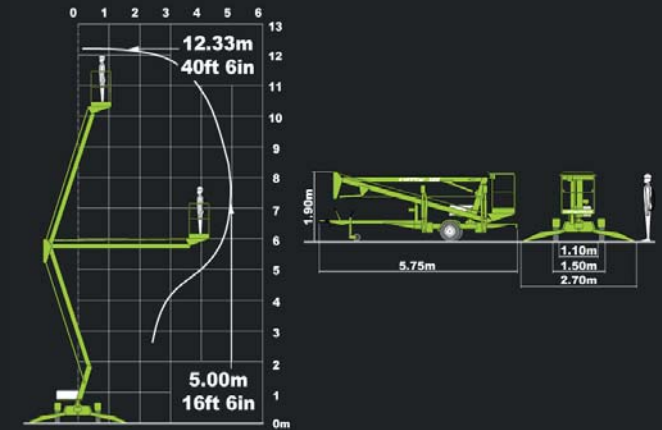
3 Tonne Concrete Crusher



- Operating Weight 3200kg
- Jaw Width 450mm x 280mm
- Output Size 20mm – 50mm

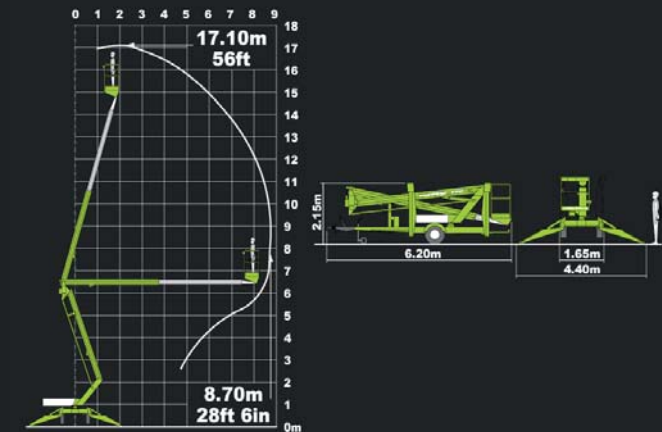
12 Metre Reach Towable Access Platform

- Working Height 12.33m
- Working Outreach 5m
- Safe Working Load 200kg
- Operating Weight 1195kg



17 Metre Reach Towable Access Platform

- Working Height 17.1m
- Working Outreach 8.7m
- Safe Working Load 200kg
- Operating Weight 1900kg



8 metre Electric Scissor Lift



- Working Height 8.2m
- Lifting Capacity 350kg
- Platform Size 3.22 x 0.8m

12 metre Electric Scissor Lift



- Working Height 12.15m
- Lifting Capacity 450kg
- Platform Size 3.7 x 1.54m

10 metre Rough Terrain Diesel Scissor Lift

- Working Height 10.15m
- Lifting Capacity 565kg
- Platform Size 3.7 x 1.54m



10 metre Electric Scissor Lift



- Working Height 10.15m
- Lifting Capacity 450kg
- Platform Size 3.22 x 1.2m

14 metre Electric Scissor Lift



- Working Height 13.8m
- Lifting Capacity 350kg
- Platform Size 3.22 x 1.22m

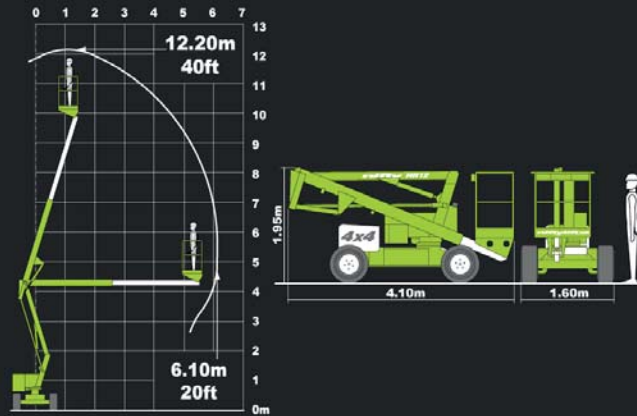
12 metre Rough Terrain Diesel Scissor Lift

- Working Height 12m
- Lifting Capacity 300kg
- Platform Size 3.22 x 1.2m



12 Metre Self Propelled Access Platform

- Working Height 12.2m
- Working Outreach 6.1m
- Safe Working Load 200kg
- Operating Weight 3330kg



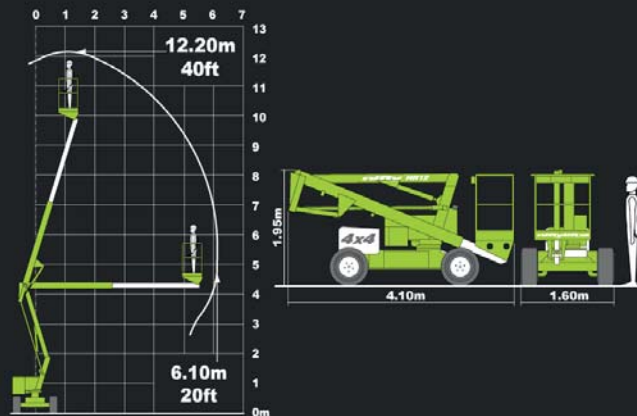
16 Metre Self Propelled Access Platform

- Working Height 15.97m
- Working Outreach 7.49m
- Safe Working Load 227kg
- Operating Weight 6078kg



21 Metre Self Propelled Access Platform

- Working Height 20.8m
- Working Outreach 12.8m
- Safe Working Load 225kg
- Operating Weight 6500kg



20 Metre Self Propelled Access Platform

- Working Height 20.39m
- Working Outreach 11.05m
- Safe Working Load 227kg
- Operating Weight 10215kg





BOWSERS

- Road Tow, Site Tow and Static Fuel Bowsers in Various Sizes
- Towable Water Bowsers

- Maximum Height 9m
- Run Time 60 Hours
- Flood Lights 4 x 1000w
- Weight 1115kg



GRAB LORRY HIRE

Anglian Plant Limited operate a fleet of 6 and 8 wheel tipper grab lorries. We undertake spot hires, contract hires and day rate hires for muck away and aggregate deliveries.

01692 536997 • hire@anglianplant.com
www.anglianplant.com

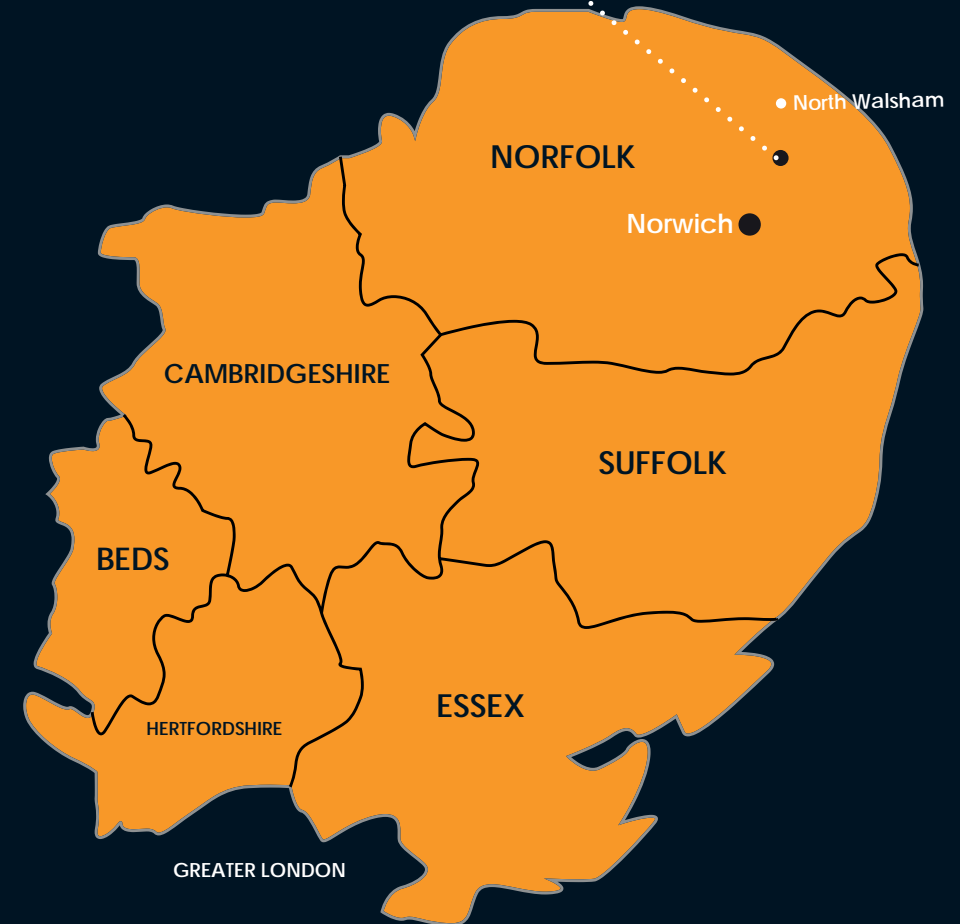
Anglian Grab, Beeches Farm, Crowgate Street, Tunstead, Norwich, Norfolk NR12 8RF

OPERATED PLANT HIRE

All plant listed in this catalogue can be supplied not only on a self drive basis but also complete with a CPCS card holding operator.

01692 536997 • hire@anglianplant.com
www.anglianplant.com

Anglian Grab, Beeches Farm, Crowgate Street, Tunstead, Norwich, Norfolk NR12 8RF



TOOLS

As well as our range of plant we offer a comprehensive selection of tools such as:

Compaction Plates • Trench Ramblers • Water Pumps
Disc Cutters • Alloy Scaffold Tower • Site Mixers • Pokers
Laser Levels • Cat Scanners • Floor Saws • Hydraulic breaker packs

PLANT HIRE THROUGHOUT EAST ANGLIA

Call Us: 01692 536997 • Email: hire@anglianplant.com

Visit: Beeches Farm, Crowgate Street, Tunstead, Norwich, Norfolk NR12 8RF

www.anglianplant.com



6 & 12 MAN MOBILE WELFARE UNITS AVAILABLE TO HIRE AT ANGLIAN PLANT



Mobile Anti-Vandal Manufactured to HSE guidelines to include:

Toilet • Washing Facilities • Drinking Water • Drying Room & Lockers • Rest Facilities

Tel: 0844 4411889 • info@anglianplant.com
www.anglianplant.com

HOW TO HIRE

TERMS

All items are hired under "Construction Plant Hire Association" terms, these can be requested from a member of staff or viewed on our website.

DELIVERY

Please call for delivery charges.

FUEL

Prices quoted exclude fuel. We can supply fuel if required, please contact the office for the current rate.

VAT

All prices quoted exclude VAT at the current rate.

PAYMENT

Non-account holders are required to pay pre-hire inclusive of a deposit and will need to produce ID.

For a credit account download the account form from our website or contact the office and we will send you one. Complete and return and we will process immediately so you can hire straight away.



01692 536997 • www.anglianplant.com

CALENDAR 2015

IT'S GETTING WET!
DON'T GET
BOGGED DOWN!

JAN 2015

M	T	W	T	F	S	S
			1	2	3	4
5	6	7	8	9	10	11
12	13	14	15	16	17	18
19	20	21	22	23	24	25
26	27	28	29	30	31	

FEB 2015

M	T	W	T	F	S	S
						1
2	3	4	5	6	7	8
9	10	11	12	13	14	15
16	17	18	19	20	21	22
23	24	25	26	27	28	

MAR 2015

M	T	W	T	F	S	S
						1
2	3	4	5	6	7	8
9	10	11	12	13	14	15
16	17	18	19	20	21	22
23	24	25	26	27	28	29
30	31					

APR 2015

M	T	W	T	F	S	S
		1	2	3	4	5
6	7	8	9	10	11	12
13	14	15	16	17	18	19
20	21	22	23	24	25	26
27	28	29	30			

MAY 2015

M	T	W	T	F	S	S
				1	2	3
4	5	6	7	8	9	10
11	12	13	14	15	16	17
18	19	20	21	22	23	24
25	26	27	28	29	30	31

JUN 2015

M	T	W	T	F	S	S
1	2	3	4	5	6	7
8	9	10	11	12	13	14
15	16	17	18	19	20	21
22	23	24	25	26	27	28
29	30					

JUL 2015

M	T	W	T	F	S	S
		1	2	3	4	5
6	7	8	9	10	11	12
13	14	15	16	17	18	19
20	21	22	23	24	25	26
27	28	29	30	31		

AUG 2015

M	T	W	T	F	S	S
					1	2
3	4	5	6	7	8	9
10	11	12	13	14	15	16
17	18	19	20	21	22	23
24	25	26	27	28	29	30
31						

SEPT 2015

M	T	W	T	F	S	S
	1	2	3	4	5	6
7	8	9	10	11	12	13
14	15	16	17	18	19	20
21	22	23	24	25	26	27
28	29	30				

OCT 2015

M	T	W	T	F	S	S
			1	2	3	4
5	6	7	8	9	10	11
12	13	14	15	16	17	18
19	20	21	22	23	24	25
26	27	28	29	30	31	

NOV 2015

M	T	W	T	F	S	S
					1	
2	3	4	5	6	7	8
9	10	11	12	13	14	15
16	17	18	19	20	21	22
23	24	25	26	27	28	29
30						

DEC 2015

M	T	W	T	F	S	S
	1	2	3	4	5	6
7	8	9	10	11	12	13
14	15	16	17	18	19	20
21	22	23	24	25	26	27
28	29	30	31			

ANGLIAN PLANT HAVE A LARGE QUANTITY
OF BOG MATS AVAILABLE TO HIRE.

Tel: 0844 4411889 • info@anglianplant.com
www.anglianplant.com



**CALL NOW
TO HIRE
01692 536997**



PLANT, TOOL & GRAB LORRY HIRE

anglianplantLtd



APPLICATION FOR CREDIT ACCOUNT

PLC ☐

Limited Company ☐

Sole Trader ☐

Charity ☐

Company Name:

Address:

Postcode:

*Reg No:

VAT No.:

Tel:

Fax:

Email:

Contact in Accounts Department:

*Registered Office Address (If any different from above):

*Names of proprietors (If non-limited company - please include date of birth and home address)

TRADE REFERENCES

Company:

Contact Name:

Address:

Post Code:

Tel No:

Company:

Contact Name:

Address:

Post Code:

Tel No:

I hereby authorise Anglian Plant Limited to obtain references from the above as and when appropriate. I agreed to abide by the terms and conditions as set out by Anglian Plant Limited which include that all invoices are due to be paid within 30 days from the date of invoice and that a purchase order must be given for services rendered.

I declare I have authority to apply for credit limit of £ on behalf of the company.

Signed:

Printed Name:

Position:

Date:

Please complete in full and return complete with a copy of your hired in plant insurance.

email: steph@anglianplant.com • Post: Anglian Plant Limited, Beeches Farm, Crowgate Street, Norwich, Norfolk, NR12 8RF • 01692 536997 • www.anglianplant.com

*All hires of equipment will be strictly subject to CPA terms and conditions of business. View on website or request a copy.



PLANT, TOOL & GRAB LORRY HIRE

anglianplantLtd

Call Us: **01692 536997**

Email: **hire@anglianplant.com**

Visit: Beeches Farm, Crowgate Street, Tunstead,
Norwich, Norfolk NR12 8RF

www.anglianplant.com